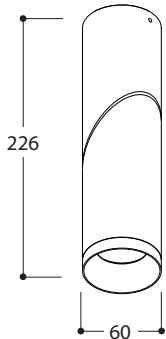


ref name MINI SCOOP DEIMOS WC

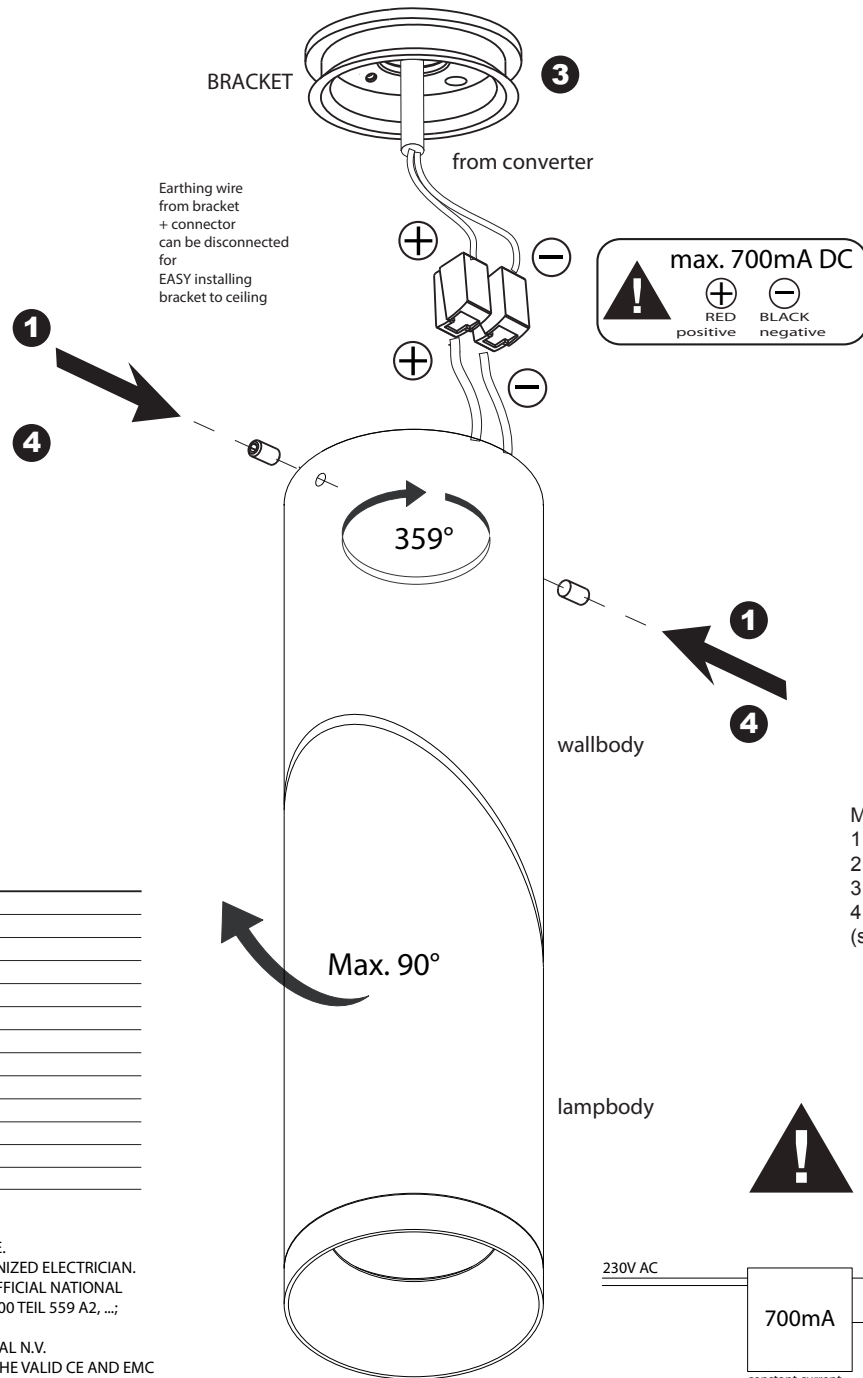
179827	MINI SCOOP LUX M 9° CI 2700K	TEXTURED WHITE
179806	MINI SCOOP LUX M 9° CI 2700K	TEXTURED BLACK
179837	MINI SCOOP LUX M 9° CI 3000K	TEXTURED WHITE
179816	MINI SCOOP LUX M 9° CI 3000K	TEXTURED BLACK
179847	MINI SCOOP LUX M 38° CI 2700K	TEXTURED WHITE
179826	MINI SCOOP LUX M 38° CI 2700K	TEXTURED BLACK
179857	MINI SCOOP LUX M 38° CI 3000K	TEXTURED WHITE
179836	MINI SCOOP LUX M 38° CI 3000K	TEXTURED BLACK
179867	MINI SCOOP LUX M 60° CI 2700K	TEXTURED WHITE
179846	MINI SCOOP LUX M 60° CI 2700K	TEXTURED BLACK
179877	MINI SCOOP LUX M 60° CI 3000K	TEXTURED WHITE
179856	MINI SCOOP LUX M 60° CI 3000K	TEXTURED BLACK



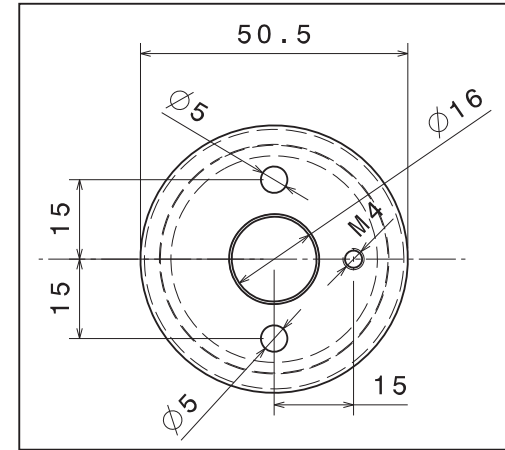
safe distance to object	- 0.1 m -
lamptype	LUX M (755lm/810lm* - 2700K/3000K* - CRI 80 - SDCM 3)
fitting	none
power	7,84W
current	Max. 700mA (Vf 11,2V)
symbol	
gear	Convertor not incorporated
ip/class	IP20 - CLASS3
application	Wall, ceiling mounted
orientability	90°-359° orientable
dimmbility	PWM/CCR dimmable (See Converter)
weight	
beam angle	9°-38°-60°

INSTALLATION AND MAINTENANCE INSTRUCTIONS IN VIEW OF THE MANUFACTURER'S GUARANTEE.

1. THE CONNECTION AND TESTING OF THE DEVICES SHOULD ALWAYS BE PERFORMED BY A RECOGNIZED ELECTRICIAN.
2. THESE LIGHTING DEVICES NEED TO BE INSTALLED, CONNECTED AND TESTED FOLLOWING THE OFFICIAL NATIONAL INSTRUCTION GUIDE FOR ELECTRICAL INSTALLATIONS (BELGIUM, A.R.E.I., GERMANY: DIN VDE 0100 TEIL 559 A2, ...; THIS ENUMERATION IS JUST AN INDICATION)
3. THIS TECHNICAL ENCLOSURE NEEDS TO BE ADDED TO THE GENERAL SALES CONDITION OF THE TAL N.V.
4. THE ELECTRO TECHNICIAN IS RESPONSABLE TO USE BALLASTS, TRANSFORMERS,...WHICH MEET THE VALID CE AND EMC RULES.



2 BRACKET DRILL PATTERN:



Mounting instructions:

1. preparation: partially unscrew 2 screws on the side.
2. fix bracket to wall or ceiling using drill pattern.
3. connect mains power supply. Leave unswitched !
4. move wallbody gently over rozas and fix with 2 screws whilst orienting. (switch on mains power supply.)



ALWAYS DISCONNECT MAINS POWER SUPPLY FROM CONVERTER BEFORE SWITCHING "ON" LED LUMINAIRES TO PREVENT HOT PLUGGING ISSUES

